

## Scrappy Squares blanket crochet pattern:



As a true crafter with yarn, you have collected loads of scraps and leftovers through the years when it comes to yarn. Or, just like me, you have collected some advent calendars with these beautiful, tiny, hand-dyed skeins of yarn. I have searched for a long time to get rid of all of these in a pattern that isn't too hard and is multifunctional when it comes to combining different types and colors of yarn. Meet the Scrappy Squares, partly inspired by the famous Memory Blanket knitting pattern – but in a different direction and, of course – as a crochet pattern!

Mark a.k.a. the Guy with the Hook

**Yarn requirements:** I have used different brands of fingering weight yarn for this blanket. I will also not give a total of yarn as you can let this blanket grow to any size possible. It is just a start-up for whatever you like to make. I have used two Colors. Color A will be a fingering weight yarn in a range of 360-420 meters of yarn per 100 grams. This will be all the scraps you like to use. As a divider, I used Color B, a white, undyed yarn in the same conditions; this can also be any brand you like if both Colors are in the same level of conditions. For example, I used brands such as Scheepjes Metropolis, Apmezga, La bien Aimee, Regia sock yarn, Simy's Studio, and many more in multiple squares.

Needed for one square:

**Color A:** any fingering scrap yarn ( 8 - 10 grams of yarn / approx. 29 – 39 meters of yarn)

**Color B:** a white or undyed fingering weight yarn ( 2 – 3 grams of yarn / approx. 8-15 meters of yarn)

If you don't like a white dividing stripe in the pattern, skip Color B, take 10 grams of scrap yarn, and crochet on with the same color. Also, when there are not 8 grams of scrap yarn left for one square, it is possible to create 8 grams out of 2 different scrap yarns. Get crazy and creative!

If you don't have any fingering weight yarn available, you can do this with any type of yarn. For example, make a DK variant or a Worsted Weight version. Important is to always stick to the chosen weight type – although in the chosen range you can definitely have some difference in length on different balls.

**Hook size needed:** As we want a nice drape, I advise a full-size hook size that is more significant for the chosen yarn. I used a 4.0mm crochet hook for the squares.

**Size:** One square without a white border will measure 10 x 10 cm (4 x 4 inches), and with a white border, it will measure 12 x 12 cm (3 x 3 inches).

There is no finished size for the entire blanket, as you can join as you go and decide your own size in the end by adding as many squares as you wish.

**Special notes:**

- The pattern will switch between the Right and Wrong sides, so you will work on both sides and turn at each Row. An extra turning chain is unnecessary, as the first chains for a new Row have already been described.
- The squares are built up from the moss stitch, which is a pretty tense stitch that needs some stretch and loose tension. Therefore, always pick a full-size crochet hook larger than the estimated size on the yarn's label.
- As you crochet square after square in this pattern using a join-as-you-go method, there is no need to sew all these squares individually together. You can decide your color placement while you go and see your work grow square by square.

**Stitch abbreviations (US terms):**

**CH** – chain(s)

**SS** – slip stitch

**SC** - single crochet

**HDC** – half double crochet

**ST(S)**: stitch(es)

**SK** - skip

**SP**- space

**REP** - repeat

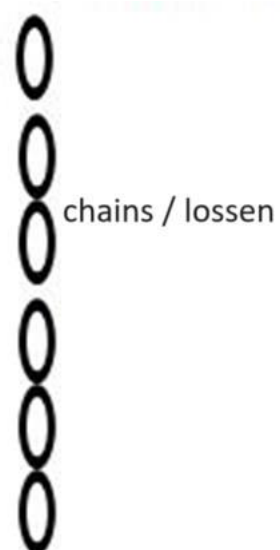
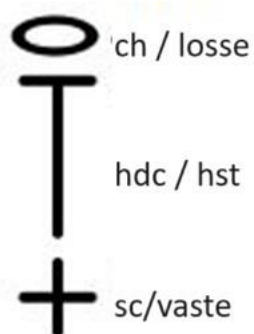
**RS** – Right Side of the work

**WS** - Wrong Side of the work

**( )** – holds a small repeat within a Row or a little note

**[ ]** – holds the total amount of stitches after a Row

**CRN** - corner



## The Pattern:

It's time to get started with just one basic square, which will be the beginning of your scrappy squares blanket. This basic square will also form the blueprint for all other squares, as in further squares, we will refer to the basic square pattern.

### 1. The Basic Square:

Take the crochet hook 4.0mm and a fingering weight scrap yarn called Color A.

**R1 (RS):** Ch3 (first hdc and a foundation ch), 2hdc in the first ch out of 3, ch2, 3hdc in the same first ch. Turn. [2 sides of 3hdc and 1 time a ch2-crn]

**R2 (WS):** Ch1 (doesn't count as st here and throughout the entire pattern), 1sc in first 3 sts, 1sc-ch2-1sc in next ch2-crn, 1sc in next 3 sts. Turn. [2 sides of 4sc and 1 time a ch2-crn]

**R3 (RS):** Ch1, 1sc in first st, ch1, sk next st, 1sc in next st, ch1, sk next st, 1sc-ch2-1sc in next ch2-crn, ch1, sk next st, 1sc in next st, ch1, sk next st, 1sc in last st. Turn. [2 sides of 3sc/2 times a ch1-sp and 1 time a ch2-crn]

**R4 (WS):** Ch1, 1sc in first st, (1sc in next ch1-sp, ch1, sk next st) till next ch2-crn, 1sc-ch2-1sc in next ch2-crn, (ch1, sk next st, 1sc in next ch1-sp) till last st on side, 1sc in last st. Turn. [2 sides of 4sc/2 times a ch1-sp and 1 time a ch2-crn]

**R5 (RS):** Ch1, 1sc in first st, ch1, sk next st, (1sc in next ch1-sp, ch1, sk next st) till next ch2-crn, 1sc-ch2-1sc in next ch2-crn, ch1, sk next st, (1sc in next ch1-sp, ch1, sk next st) till last st of side, 1sc in last st. Turn. [2 sides of 4sc/3 times a ch1-sp and 1 time a ch2-crn]

**R6 (WS):** Rep R4. [2 sides of 5sc/3 times a ch1-sp and 1 time a ch2-crn]

**R7 (RS):** Rep R5. [2 sides of 5sc/4 times a ch1-sp and 1 time a ch2-crn]

**R8 (WS):** Rep R4. [2 sides of 6sc/4 times a ch1-sp and 1 time a ch2-crn]

**R9 (RS):** Rep R5. [2 sides of 6sc/5 times a ch1-sp and 1 time a ch2-crn]

**R10 (WS):** Rep R4. [2 sides of 7sc/5 times a ch1-sp and 1 time a ch2-crn]

**R11 (RS):** Rep R5. [2 sides of 7sc/6 times a ch1-sp and 1 time a ch2-crn]

**R12 (WS):** Rep R4. [2 sides of 8sc/6 times a ch1-sp and 1 time a ch2-crn]

**R13 (RS):** Rep R5. [2 sides of 8sc/7 times a ch1-sp and 1 time a ch2-crn]

**R14 (WS):** Rep R4. [2 sides of 9sc/7 times a ch1-sp and 1 time a ch2-crn]

**R15 (RS):** Rep R5. [2 sides of 9sc/8 times a ch1-sp and 1 time a ch2-crn]

**R16 (WS):** Rep R4. [2 sides of 10sc/8 times a ch1-sp and 1 time a ch2-crn]

**R17 (RS):** Rep R5. [2 sides of 10sc/9 times a ch1-sp and 1 time a ch2-crn]

**R18 (WS):** Rep R4. [2 sides of 11sc/9 times a ch1-sp and 1 time a ch2-crn]

**R19 (RS):** Rep R5. [2 sides of 11sc/10 times a ch1-sp and 1 time a ch2-crn]

**R20 (WS):** Rep R4. [2 sides of 12sc/10 times a ch1-sp and 1 time a ch2-crn]

**R21 (RS):** Rep R5. [2 sides of 12sc/11 times a ch1-sp and 1 time a ch2-crnl]

**R22 (WS):** Rep R4. [2 sides of 13sc/11 times a ch1-sp and 1 time a ch2-crnl]

**R23 (RS):** Rep R5. [2 sides of 13sc/12 times a ch1-sp and 1 time a ch2-crnl]

**R24 (WS):** Rep R4. [2 sides of 14sc/12 times a ch1-sp and 1 time a ch2-crnl]

**R25 (RS):** Rep R5. [2 sides of 14sc/13 times a ch1-sp and 1 time a ch2-crnl]

**R26 (WS):** Rep R4. [2 sides of 15sc/13 times a ch1-sp and 1 time a ch2-crnl]

**R27 (RS):** Rep R5. [2 sides of 15sc/14 times a ch1-sp and 1 time a ch2-crnl]

**R28 (WS):** Rep R4. [2 sides of 16sc/14 times a ch1-sp and 1 time a ch2-crnl]

**R29 (RS):** Rep R5. [2 sides of 16sc/15 times a ch1-sp and 1 time a ch2-crnl]

**R30 (WS):** Rep R4. [2 sides of 17sc/15 times a ch1-sp and 1 time a ch2-crnl]

Fasten off Color A. Now attach Color B (the white/undyed yarn) to the first st at the RS of the work.

**R31 (RS):** Rep R5. [2 sides of 17sc/16 times a ch1-sp and 1 time a ch2-crnl]

**R32 (WS):** Rep R4. [2 sides of 18sc/16 times a ch1-sp and 1 time a ch2-crnl]

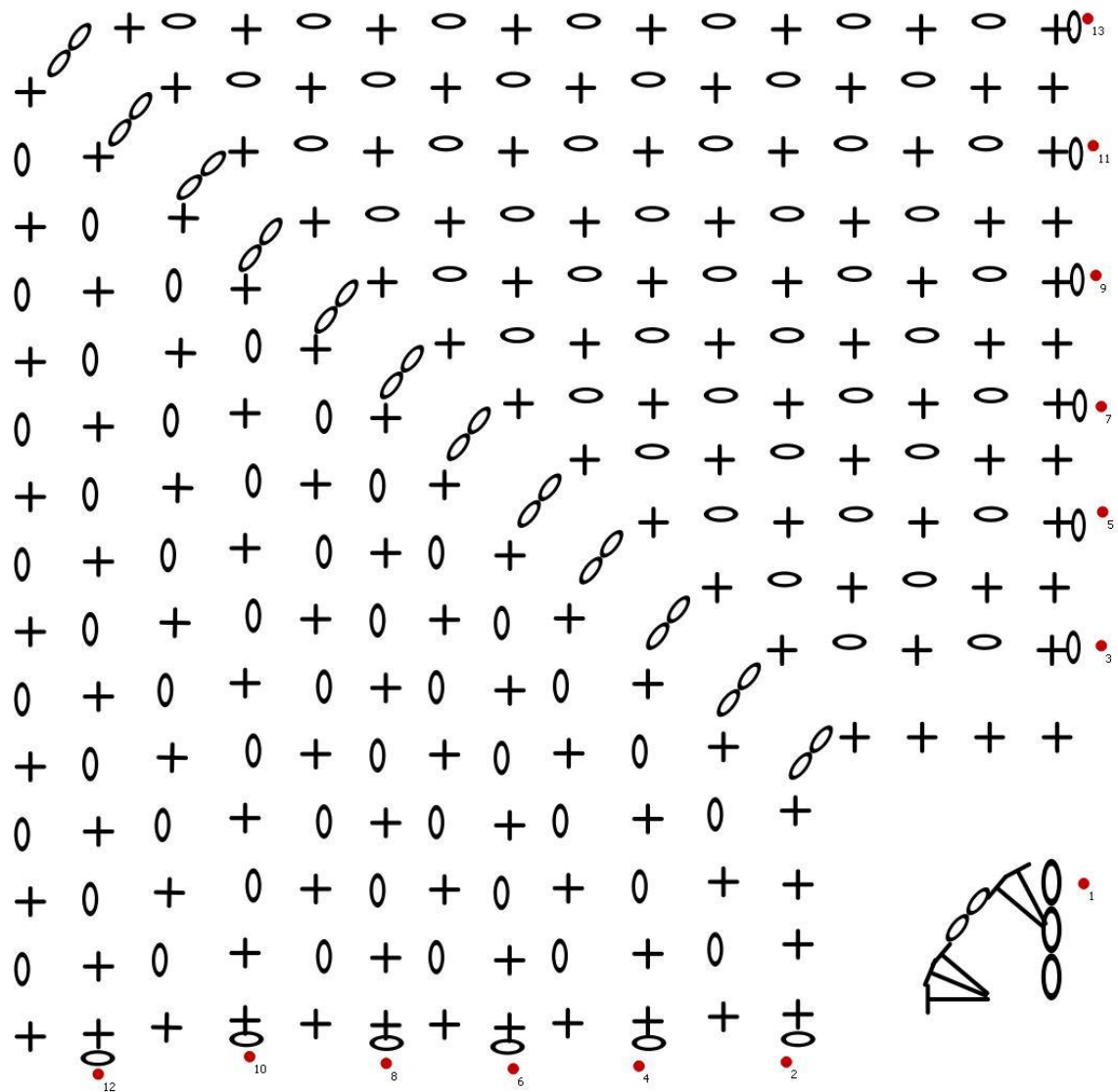
**R33 (RS):** Rep R5. [2 sides of 18sc/17 times a ch1-sp and 1 time a ch2-crnl]

**R34 (WS):** Rep R4. [2 sides of 19sc/17 times a ch1-sp and 1 time a ch2-crnl]

Fasten off Color B. Weave in all ends so far. This will be the first basic square.

The chart on the next page will show you how the square is built up. I have drawn this up to Row 13 as you repeat the same process in each Row until R34. As a start, this chart will get you on your way.





As the next step, you must add a square at the top and left of this first square. Both options will be needed later on as well to let your blanket grow, so let's start with adding a square on top of a square.

*From this point you will crochet square 2,3 and 4. All of these squares will be attached to one or two sides from a already made square. Important to know is that you always only use all the ch-sps on a already existing square and skip the sc's. As you will use slip stitches to connect, these slip stitches will never count as a actual stitch. They are only meant for connecting. Don't think it is the first st on a new Row.*



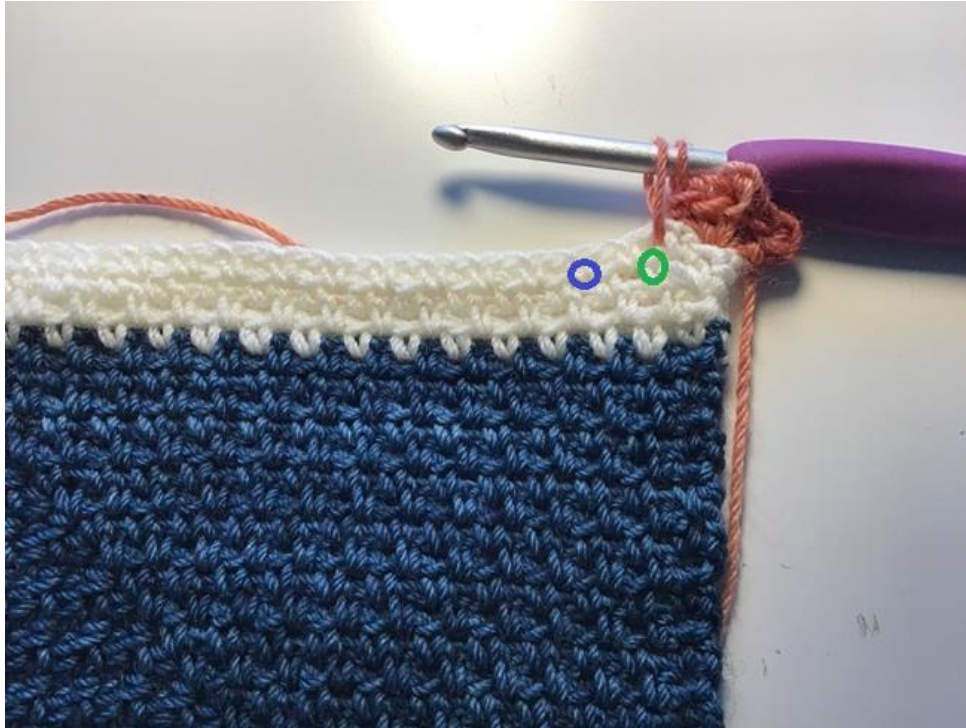
## 2. Adding a Square at the top side:

Take the crochet hook 4.0mm and a fingering weight scrap yarn called Color A.

Add the yarn to the first st of the RS of the underlying square, which will be the first st at the top side of the square. See the photo for more clarity.



**R1 (RS):** Ch2 (first hdc), 2hdc-ch2-3hdc in same first st on this top side's first st. Make a ss in the next ch1-sp on the underlying square's side to anchor your Row to the square. (See the green circle in the next photo.) Now ss to the next ch1- sp on the underlying square's side. (see blue circle on next photo) Turn. [2 sides of 3hdc and 1 time a ch2-crnl]



**R2 (WS):** Ch1, 1sc in first 3 sts, 1sc-ch2-1sc in next ch2-crn, 1sc in next 3 sts. Turn. [2 sides of 4sc and 1 time a ch2-crn]

**R3 (RS):** Ch1, 1sc in first st, ch1, sk next st, 1sc in next st, ch1, sk next st, 1sc-ch2-1sc in next ch2-crn, ch1, sk next st, 1sc in next st, ch1, sk next st, 1sc in last st. Make a ss in the next ch1-sp on the underlying square's side. Turn. [2 sides of 3sc/2 times a ch1-sp and 1 time a ch2-crn]





Now, keep on going by repeating R4-30 of the basic square pattern, making a ss in the next ch1-sp of the underlying square's side at the end of each RS Row, so it is even an odd row. Once you've completed R30, fasten off Color A. The result will look like this:



Attach Color B in the first st at the RS of the work.

- Rep R31 of the basic square – making a ss in the next ch1-sp of the underlying square's side. Turn.
- Rep R32 of the basic square.
- Rep R33 of the basic square – making a ss in the next ch2-crn of the underlying square's side. Turn.
- Rep R34 of the basic square. Fasten off Color B and weave in all ends.

You have now created a top-side square. To gain height at the side of the blanket, you will need to reproduce this square many times later on. For now, let's first add a square to the left side of the basic square. In this way, we add a +1 on both sides of the first square.

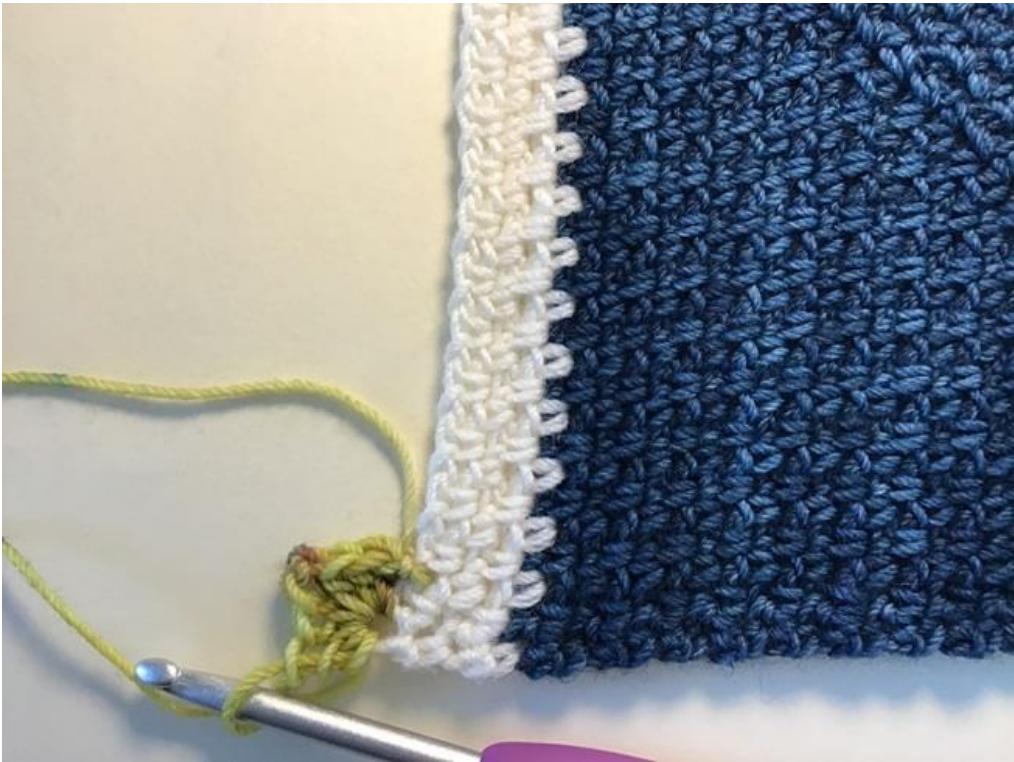
### 3. Adding a Square at the left side:

Take the crochet hook 4.0mm and a fingering weight scrap yarn called Color A.

Add the yarn to the first ch1-sp after the first two sc at the RS of the right square, See the photo for more clarity.

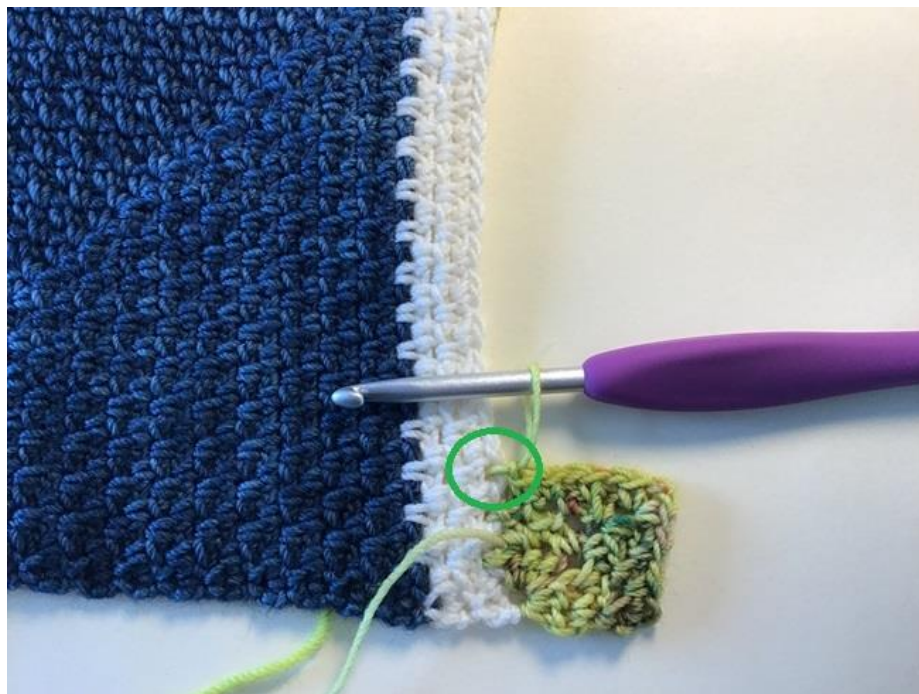


**R1 (RS):** 3hdc-ch2-3hdc in first of the two skipped sts at the beginning of the right-side square. See the next photo for more clarity. Turn work. [2 sides of 3hdc and 1 time a ch2-crn]





**R2 (WS):** Ch1, 1sc in first 3 sts, 1sc-ch2-1sc in next ch2-crn, 1sc in next 3 sts. Now make a ss in the next ch1-sp of the right-side square. (see next photo for more clarity). Turn. [2 sides of 4sc and 1 time a ch2-crn]



**R3 (RS):** Ch1, 1sc in first st, ch1, sk next st, 1sc in next st, ch1, sk next st, 1sc-ch2-1sc in next ch2-crn, ch1, sk next st, 1sc in next st, ch1, sk next st, 1sc in last st. Turn. [2 sides of 3sc/2 times a ch1-sp and 1 time a ch2-crn]

Now, keep on going by repeating R4-30 of the basic square pattern, making a ss in the next ch1-sp of the right-side square at the end of each WS Row, so it is even an even row. Once you've completed R30, fasten off Color A. The result will look like this:



Attach Color B in the same last ch1-sp you ended R30, but now on the RS of the work.

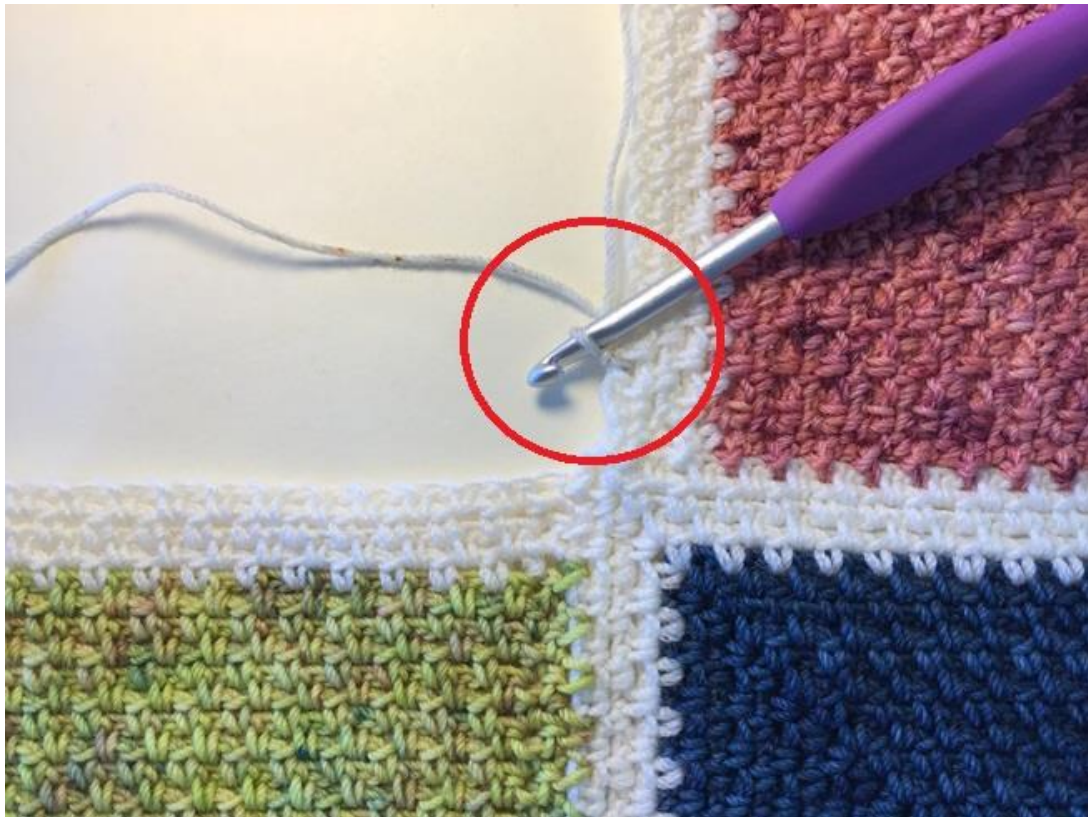
- Rep R31 of the basic square.
- Rep R32 of the basic square, making a ss in the next ch1-sp of the underlying square's side. Turn.
- Rep R33 of the basic square.
- Rep R34 of the basic square, making a ss in the next ch2-crn of the underlying square's side. Fasten off Color B and weave in all ends.

You have now created a left side square. To gain width at the side of the blanket, you will need to reproduce this square many times later on. For now, let's first see how to add a square between two sides of already made squares. This will be the last keystone to continue on.

#### 4. Adding a Square between two existing squares:

Take the crochet hook 4.0mm and a fingering weight scrap yarn called Color A.

Add the yarn to the first ch1-sp after the first two sc at the RS of the top side square, See the photo for more clarity.



**R1 (RS):** 3hdc-ch2-3hdc in the ch2-crn in the middle of the three squares. Now make a ss in the first ch1-sp after the first two sc on the bottom side square (green circle on next photo), make a ss in the next ch1-sp at the same bottom side square. (blue circle on next photo). See the next photo for more clarity. Turn work. [2 sides of 3hdc and 1 time a ch2-crn]





**R2 (WS):** Ch1, 1sc in first 3 sts, 1sc-ch2-1sc in next ch2-crn, 1sc in next 3 sts. Now make a ss in the next ch1-sp of the top side square. (see next photo for more clarity).Turn. [2 sides of 4sc and 1 time a ch2-crn]





**R3 (RS):** Ch1, 1sc in first st, ch1, sk next st, 1sc in next st, ch1, sk next st, 1sc-ch2-1sc in next ch2-crn, ch1, sk next st, 1sc in next st, ch1, sk next st, 1sc in last st. Now make a ss in the next ch1-sp of the bottom side square. (see next photo for more clarity). Turn. [2 sides of 3sc/2 times a ch1-sp and 1 time a ch2-crn]



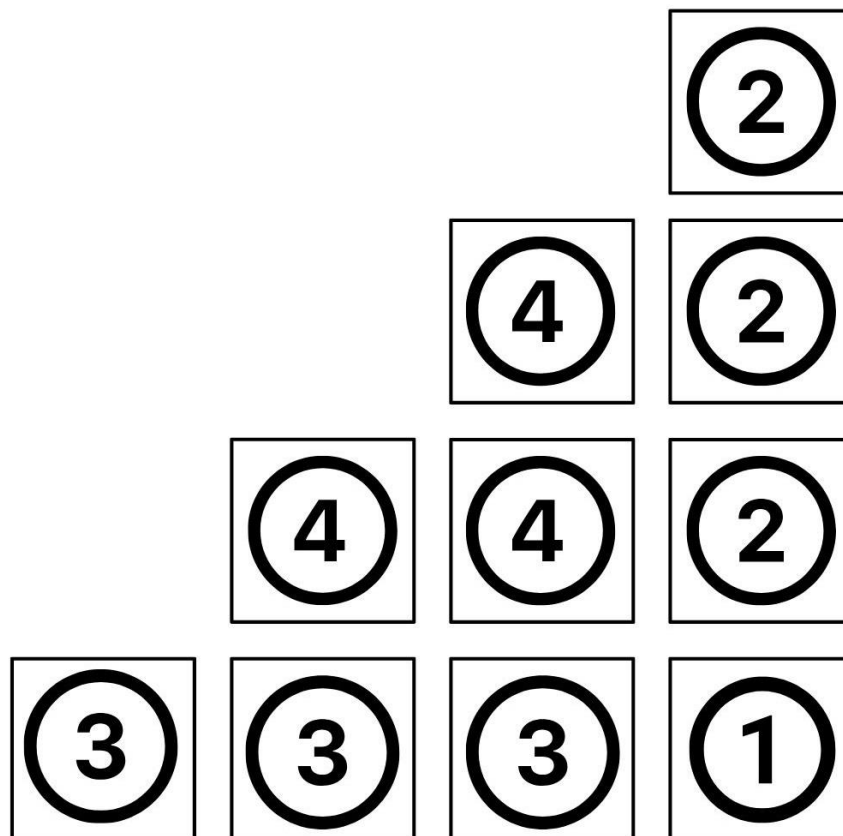
Now, keep on going by repeating R4-30 of the basic square pattern, making a ss in the next ch1-sp of the top side square at the end of each WS Row, so it is even an even row. And make a ss in the next ch1-sp of the bottom side square at the end of each RS Row, so it is even an odd row. Once you've completed R30, fasten off Color A. The result will look like this:



Attach Color B in the same last ch1-sp you ended R30, but now on the RS of the work.

- Rep R31 of the basic square, making a ss in the next ch1-sp at the top side square. Turn.
- Rep R32 of the basic square, making a ss in the next ch1-sp of the bottom side square. Turn.
- Rep R33 of the basic square, making a ss in the next ch2-crn of the top side square. Turn.
- Rep R34 of the basic square, making a ss in the next ch2-crn of the bottom side square. Fasten off Color B and weave in all ends.

You have now created a square between two existing squares. This is the last part to complete and you can now let your blanket grow as much as you want. At the right side of the blanket, you increase with crocheting squares on top, and to increase the width you crochet squares to the left of the blanket. Between them you use the in between square. Under here is a little example of how to build up your blanket with the different types of squares.



The numbers in the squares refer to the numbers of the different squares. Always make sure to let your blanket grow in a diagonal direction, having one number 2 and 3 square extra at the sides, and then fill them up with number 4 squares first – till you reach a point of desired length and width. When you reach that point, just fill up the remaining missing squares. In this way the blanket will grow and grow till a lot of scraps are used up and you have done a great job!

Thanks to my testers: Tineke Tap and Anja van Ochten

Designed by: *the guy with the hook* – 2024

<https://theguywiththehook.com>

<https://www.instagram.com/theguywiththehook>

<https://www.ravelry.com/projects/theguywiththehook>

<https://www.ravelry.com/designers/mark-roseboom>

<https://www.facebook.com/theguywiththehook>

*All copyrights and terms of use are with me. Please do not copy or share this pattern. In 2019, I started using the international copyright rules and terms that apply to countries worldwide. It also includes countries that did not agree to work with this accord. Recently, it has become common for crochet patterns and designs to be stolen from designers, including myself. I have no other choice but to tighten up the copyright validation. Legal action will be taken if sharing occurs in Telegram/WhatsApp groups, social media, secret groups, or websites.*

*Feel free to sell finished items using this pattern. Also, please tag or reference me as the designer when showing your WIP's or finished projects and use the hashtag **#scrappysquarescrochetpattern** on social media to share.*

*Last but not least, thank you so much for making this pattern. A lot of time, effort, and creativity are wrapped in this little piece of art. Every creation that comes from this pattern makes all my efforts so worthwhile.*

*Mark, a.k.a. the guy with the hook*